

# MONTHLY MEMBERSHIP PROGRESS REPORT

LOCATION MARYLAND

District 22 A

Results as of: 12/31/2021

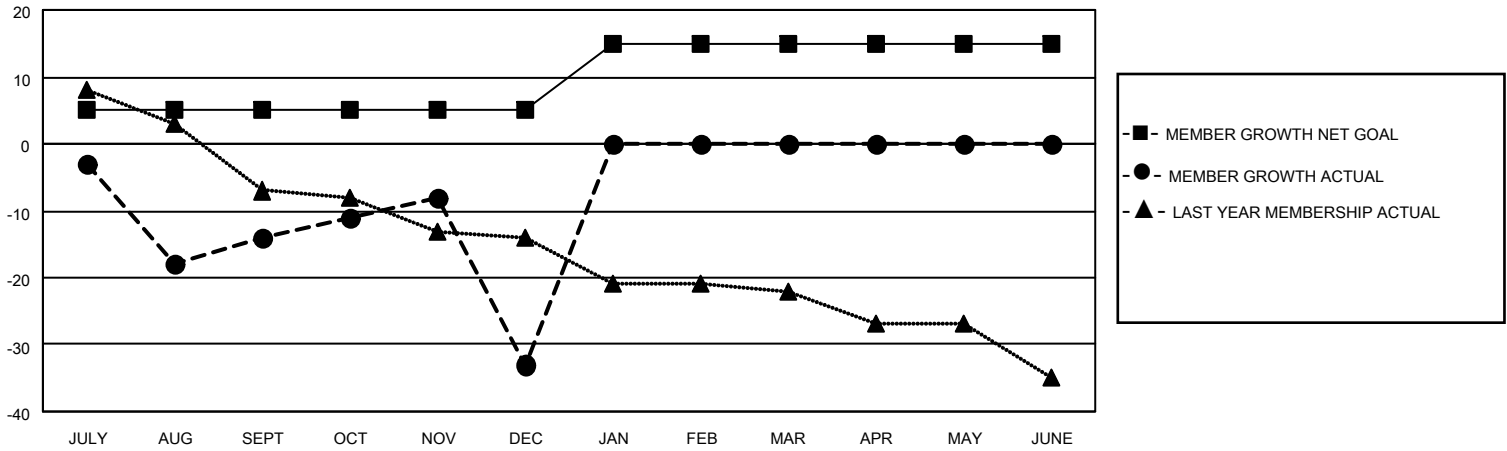
Clubs			
RESULTS FOR 2021-2022			
QUARTER	NEW CLUB GOAL	NEW CLUBS	DROPPED CLUBS
JULY/AUG/SEPT	0	0	0
OCT/NOV/DEC	1	0	1
JAN/FEB/MAR	0	0	0
APR/MAY/JUNE	1	0	0

Members			
RESULTS FOR 2021-2022			
QUARTER	MEMBER GROWTH NET GOAL	MEMBER GROWTH ACTUAL	DROPPED MEMBERS ACTUAL (including transfers)
JULY/AUG/SEPT	5	15	25
OCT/NOV/DEC	0	18	37
JAN/FEB/MAR	10	0	0
APR/MAY/JUNE	0	0	0

**GOALS AND ACTUAL NEW CLUBS CUMULATIVE**



**GOALS AND ACTUAL MEMBERS CUMULATIVE**



DROPPED CLUBS: 1	
<u>DROPPED MEMBERS</u>	
DECEASED	14
CLUB CANCELLED	17
OTHER	31
<b>TOTAL</b>	<b>62</b>

11 CLUBS OF 26 ADDED 1 OR MORE NEW MEMBERS

[CLICK HERE FOR CUMULATIVE MEMBERSHIP DATA](#)

<u>GENDER DISTRIBUTION</u>	
MALE	376 (63.09%)
FEMALE	220 (36.91%)
NON BINARY	0 (0.00%)
PREFER NOT TO ANSWER	0 (0.00%)
<b>TOTAL FAMILY UNIT MEMBERS</b>	<b>103</b>
<b>FAMILY MEMBERS PAYING HALF DUES</b>	<b>52</b>